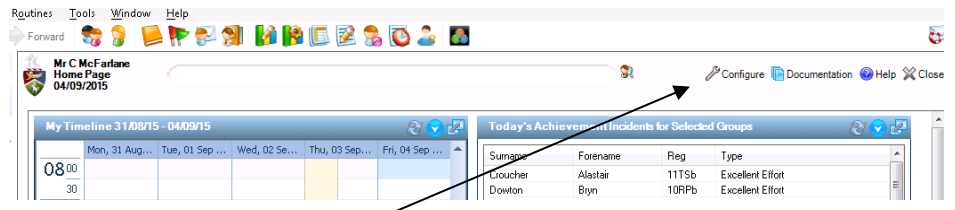
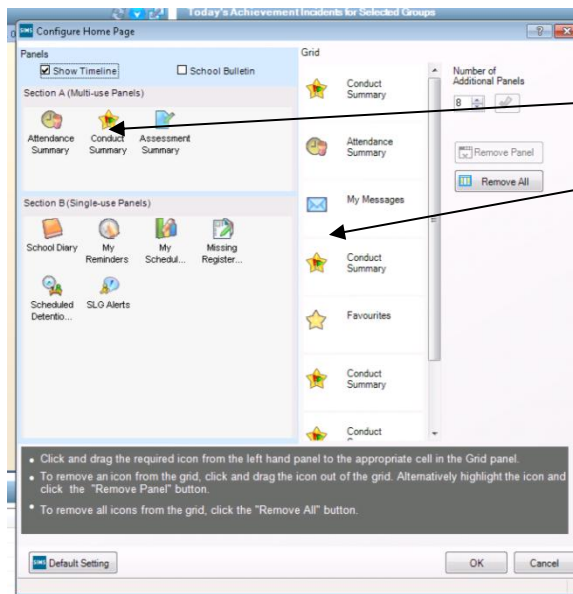


Setting up your Sims Homepage – Academic Classes

Adding Panels



Click the Configure button on the top right of your screen



Drag 3 'Conduct Summary' Panels from here....

...into here

...and then one attendance Summary

Configuring the Panels

Conduct

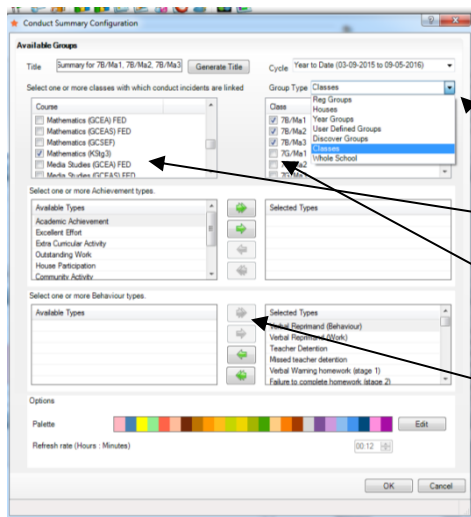
A conduct panel can show:

- Behaviour Incidents
- Achievements or
- Both (one bar that shows whether their conduct is overall positive or negative)

Behaviour Panel



Click on the 'Down Arrow' and then the 'Spanner' icon



Change the 'Group Type' drop down to Classes

Then select the correct course (KS3, GCSE, AS or A2)

The classes that are associated with that course will appear here. Tick the ones that you want displayed

Click the right arrow to bring across the behaviour types that you want displayed on the graph on your homepage – you'll probably want them all

Click OK

A graph should now be displayed of the behaviour incidents that have been logged for these the pupils in these classes. Double clicking any bar will bring up the names of those pupils. Double click the pupil name to bring up that pupil's details where you can view the behaviour log in more detail

Achievement

Same as above but bring over all the 'Achievement Types'. Note – each panel needs to be given a unique name

Conduct Summary

Bring over all the behaviour and achievements incident

Configure – then the same as before!

Toggling a Panel

The Toggle command will change your panel from a graph – to a list of students who have had logs today. Very useful for HOH, ST etc.