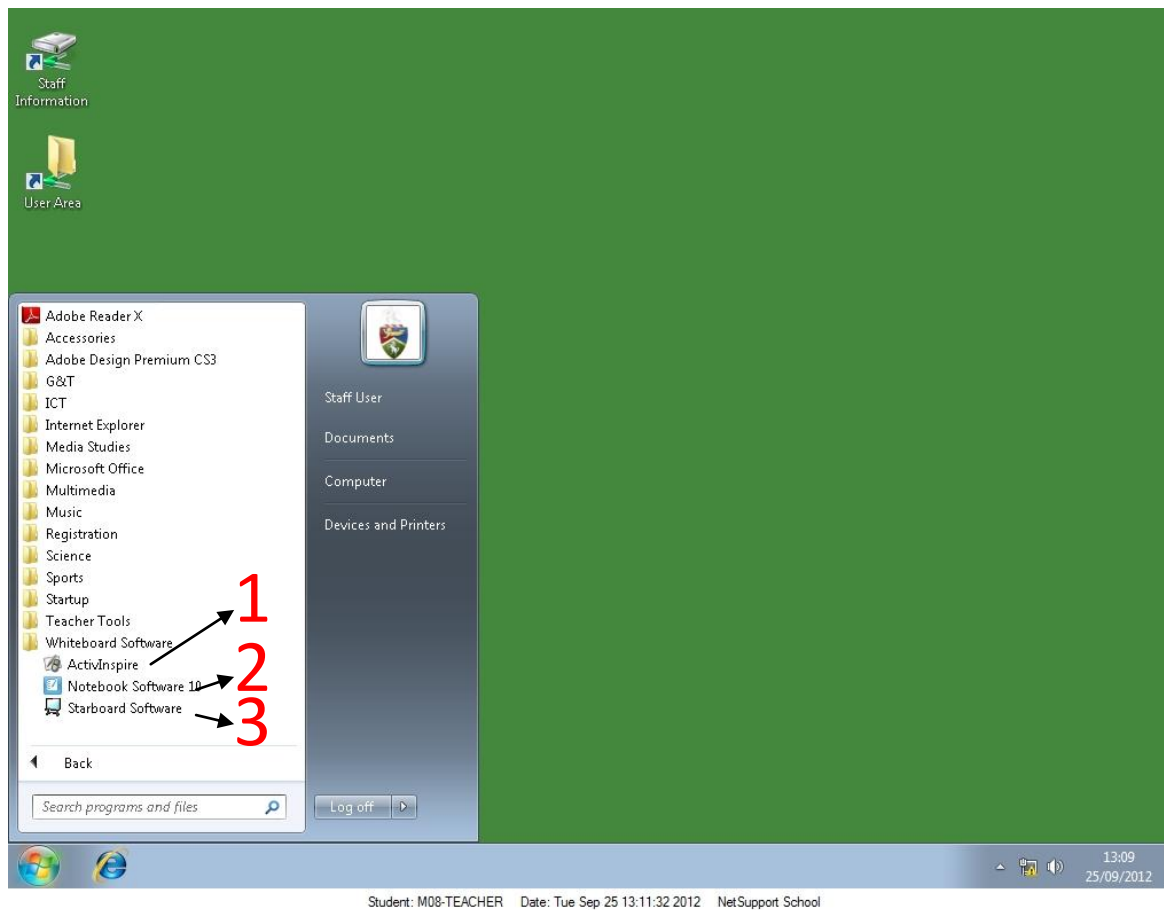


[Type text]

## Using Interactive Whiteboards and Software

As you may have noticed, there are 3 different types of whiteboard across the federation each of which has its own software. In order to fully interact with the IWB you need to use the correct software. The board will still work as a giant mouse mat regardless of software however you will not have full functionality. This is especially important to note when trying to Calibrate/Orient the board. You must use the correct software for this to work.



### 1 – ActivInspire

This software is for use with **Promethean Whiteboards**

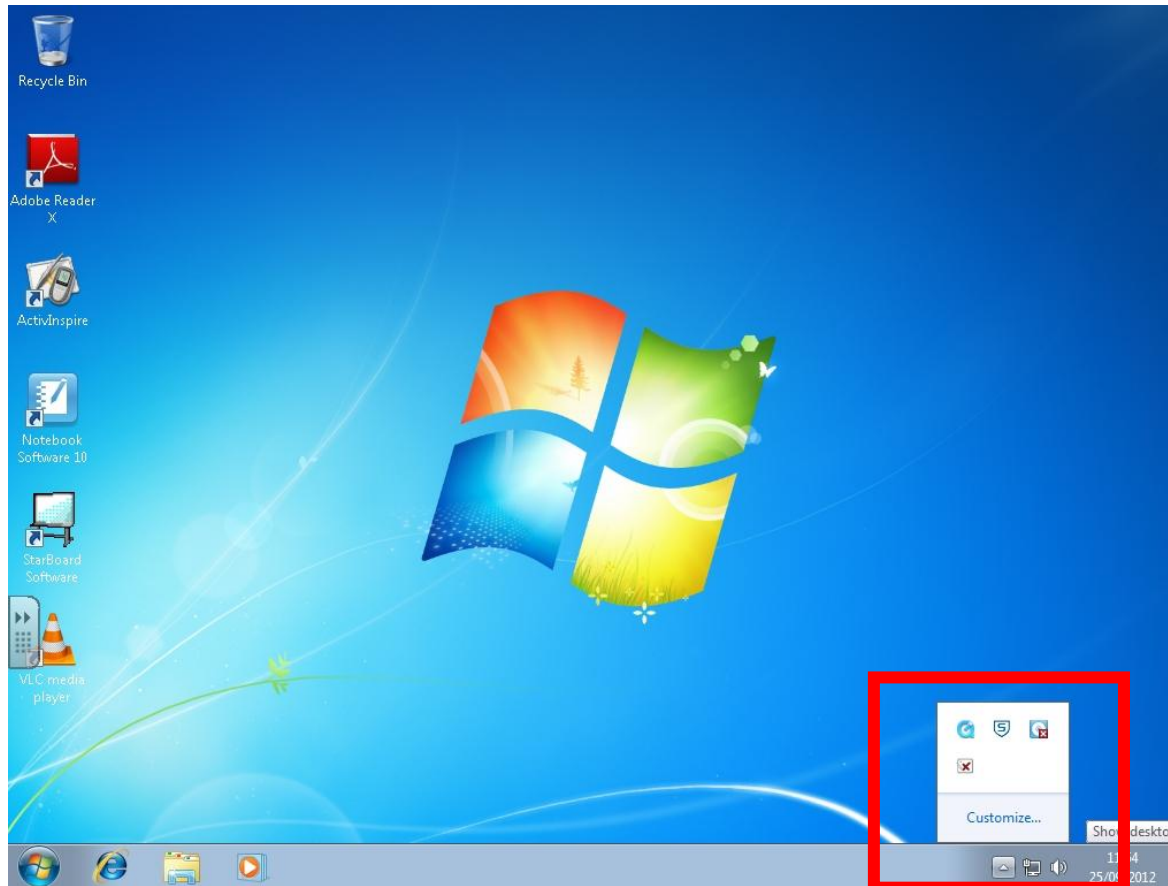
### 2 - Notebook

This software is for use with **SMART Whiteboards**

### 3 - Starboard

This software is for use with **Hitachi Whiteboards**

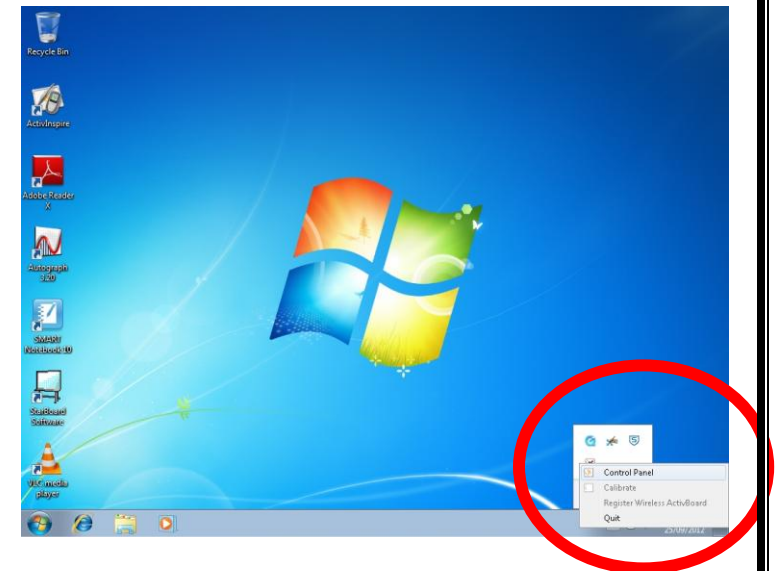
[Type text]



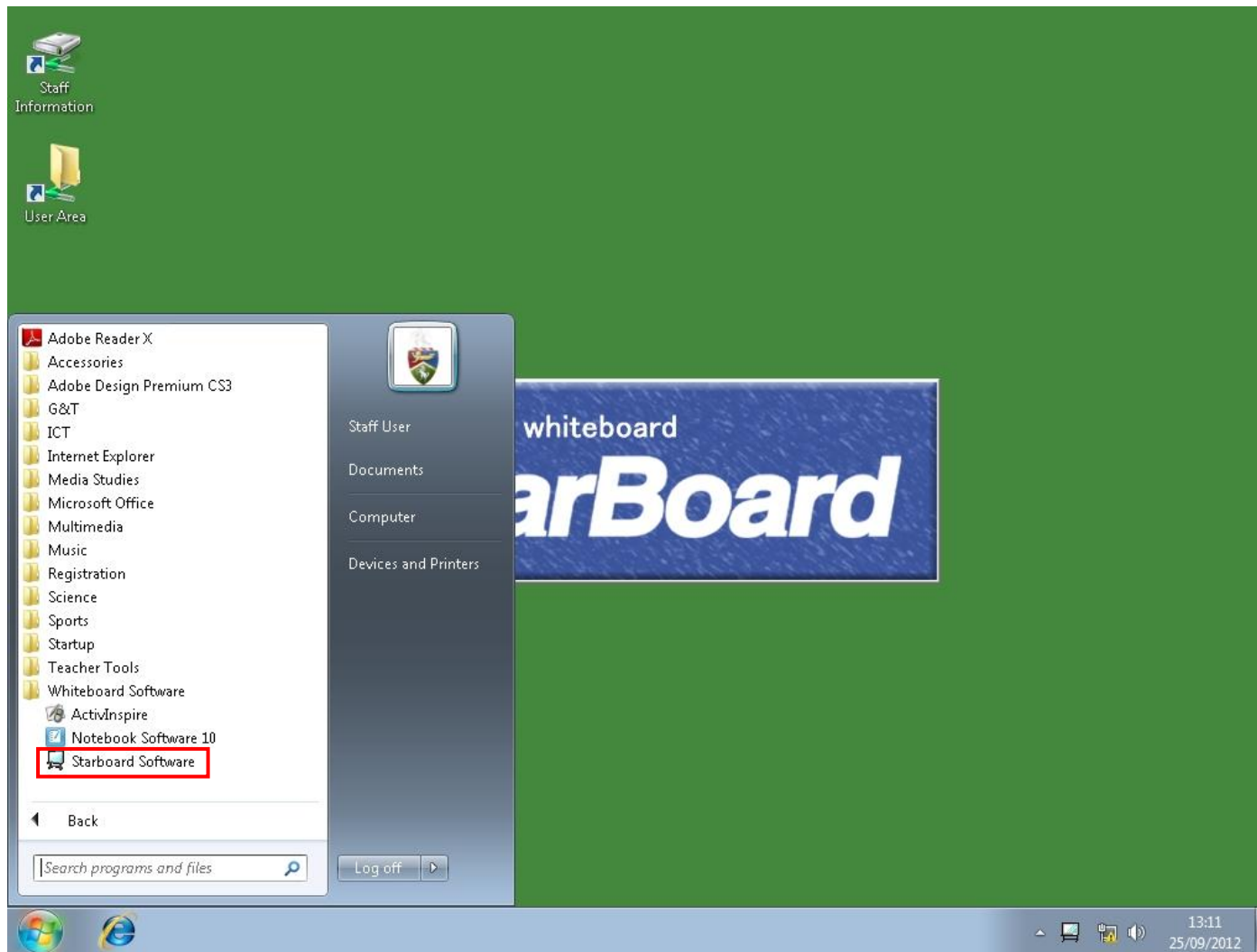
Student: GF2-TEACHER Date: Tue Sep 25 11:54:07 2012 NetSupport School

In the bottom right hand side of the screen you will see a small downward pointing arrow. This is where you will find the controls for both **Promethean boards** and **SMART boards**.

If you then 'right click' on either of the whiteboard icons you have the option to **Calibrate or Orient** (both having the same meaning).



[Type text]



To Calibrate the Hitachi whiteboards you must use the **Starboard Software** to be found on the start menu, under All Programs > Whiteboard software.

[Type text]

This is an example of a **SMART Board** →

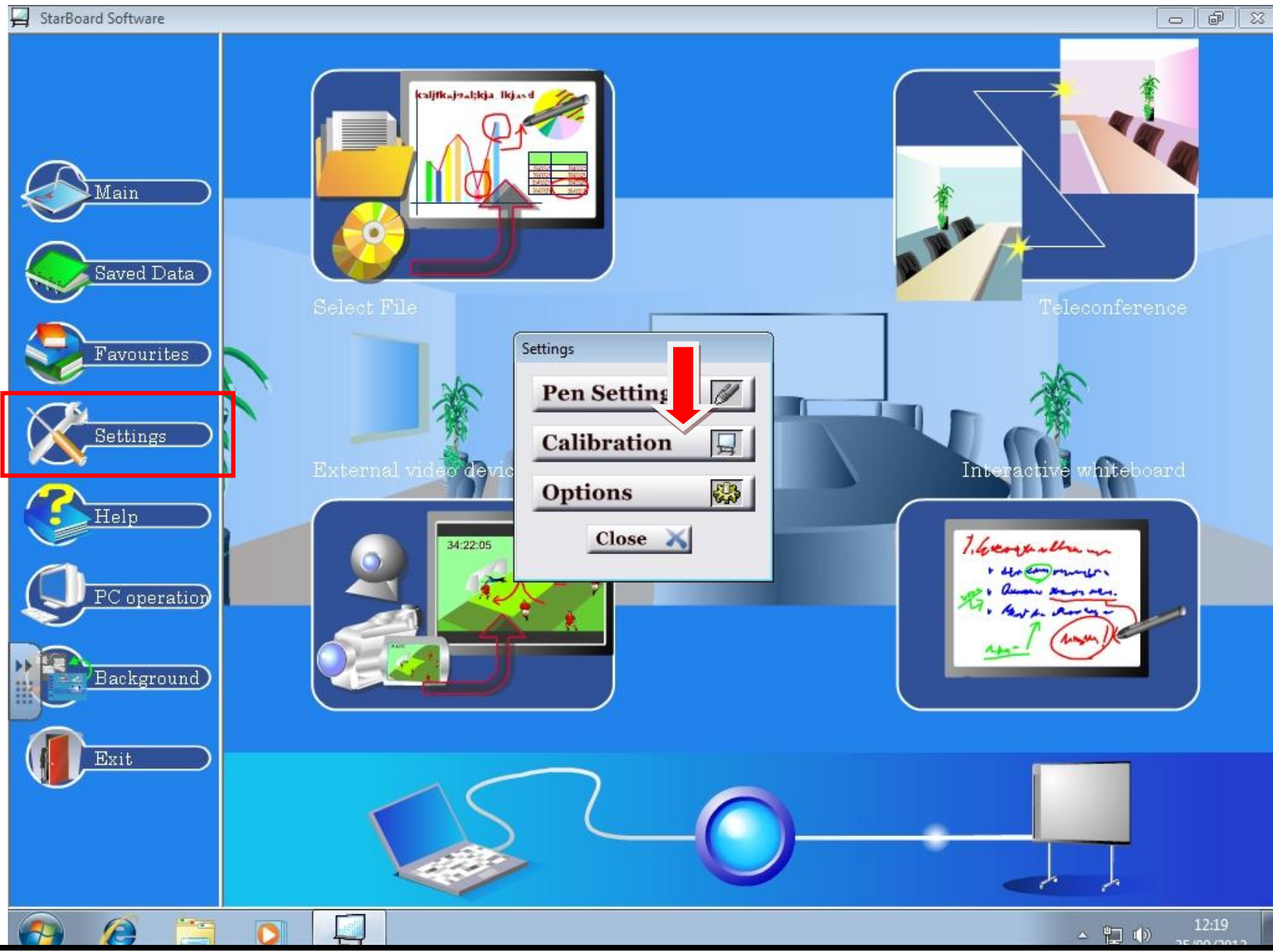


← This is an example of a **Promethean ActivBoard**

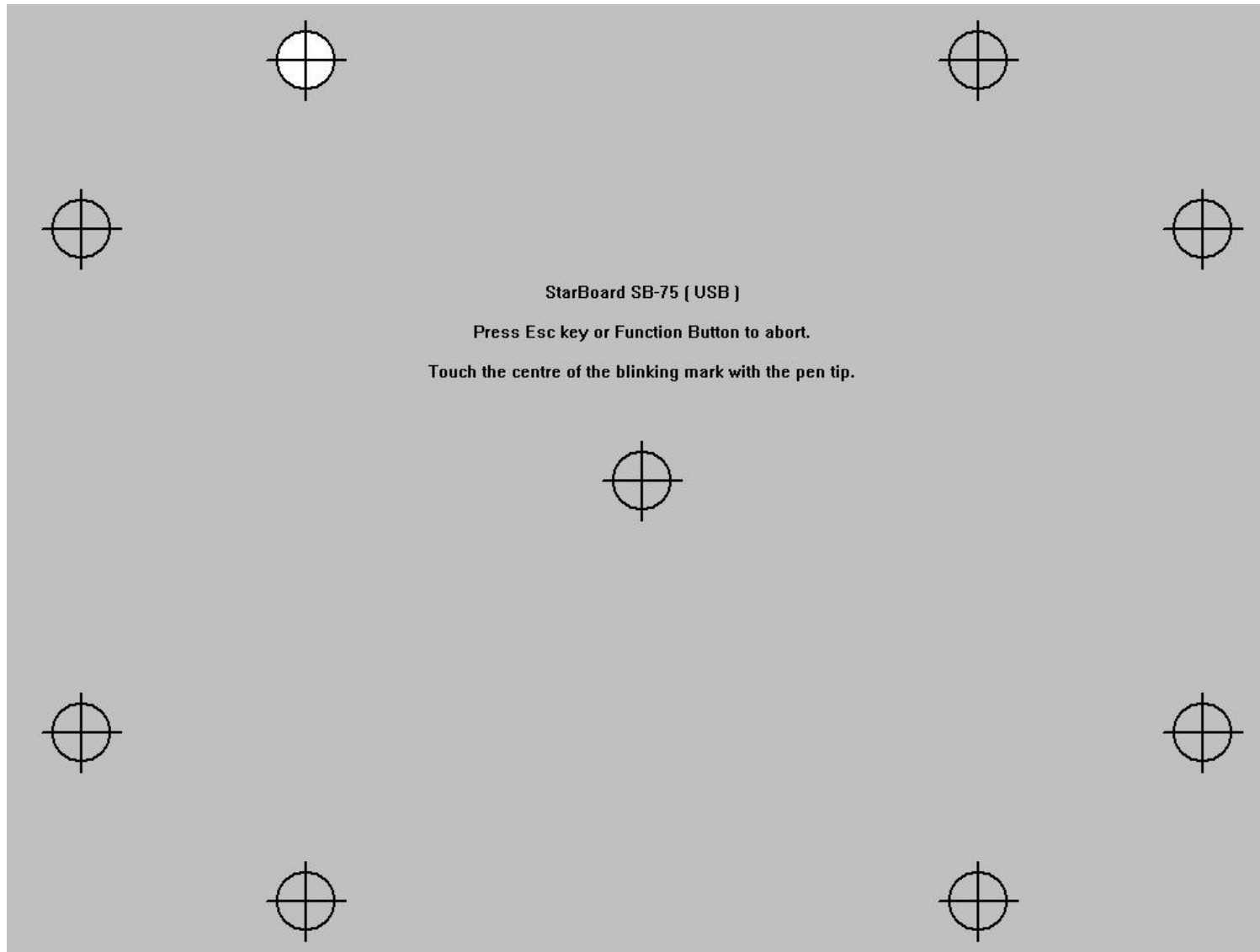
This is an example of a **Hitachi Whiteboard** ↗



[Type text]



[Type text]



You will then have to click the pen on to the flashing red crosshair. This will ensure that when you write on the board, the cursor appears and tracks in the right place.

Student: M07-TEACHER Date: Tue Sep 25 12:27:50 2012 NetSupport School